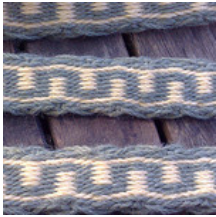


Square snake



Card threading pattern

|   | 1 | 2 | 3 | 4 | 5 | 6 | 7 | 8 | 9 | 10 | 11 | 12 |
|---|---|---|---|---|---|---|---|---|---|----|----|----|
| A | X | X | O | X | X | O | O | O | O | O  | X  | X  |
| B | X | X | O | X | X | X | X | X | X | O  | X  | X  |
| C | X | X | O | X | X | X | X | X | X | O  | X  | X  |
| D | X | X | O | O | O | O | O | X | X | O  | X  | X  |
|   | S | Z | S | S | S | S | S | S | S | S  | Z  | S  |

|   |    |
|---|----|
| X | 32 |
| O | 16 |

Turning sequence

4F

4B

Repeat

Advise all forward on edges (1-2 and 11-12) then reverse when untwisting the warps becomes necessary